

HONORARY CAMPAIGN CO-CHAIRS BRING HISTORY OF SERVICE TO ST. MARK'S

Sid and Annette Stubbs, honorary co-chairs of the *WE WILL! Build in Faith* capital campaign to build the new St. Mark's campus, bring a lot of history to the table. Forty-four years and counting, to be exact!

"We visited St. Mark's in 1967 and decided to stay," says Sid. Over the years, the Stubbs family has been involved in almost all aspects of church life, from bazaars to bible classes, Camp Wingman to Cursillo. They were even part of the lawn-mowing crew in the early days! Sid and Annette's children, Natalie, Melanie, and Scott, now grown, were active as acolytes and in youth groups.

Sid's professional career as a partner and board member at Jones, Foster, Johnston & Stubbs, P.A., in West Palm Beach, has earned

him a stack of commendations and honors. Outside the courtroom, Sid and Annette enjoy hiking – they walked across England in 19 days! But they always find their way back home to St. Mark's.



"We have watched St. Mark's expand its ministry into our community in increasing ways," says Sid. "Through constant use, our facilities have become worn and inadequate to support the ever-expanding mission in our community. The children in our school need

and deserve better facilities."

Sid and Annette urge their fellow parishioners to contribute to the extent that they are able. "The current campaign to update and renovate the St. Mark's campus is enormously important," Sid says.



The east side of St. Mark's Hall includes a circular, covered drop-off area that will provide sheltered access to all the main campus buildings.

**WE
WILL!**
Build in Faith

PHASE III *St. Mark's Hall*



A NEW HOME FOR GOD'S WORK!

We are about to embark on the most transformative phase of our plan to build the new St. Mark's campus. St. Mark's Hall will give us the space we need to carry forth our mission: to be a beacon of faith, hope, and light. At St. Mark's Hall we will serve our church and school family, as well as our community.

**TAKE
A LOOK
INSIDE
TO SEE!**



**WE
WILL!**
Build in Faith

3395 Burns Road, Palm Beach Gardens, FL 33410
Church (561) 622-0956, School (561) 622-1504, www.stmarkspb.org

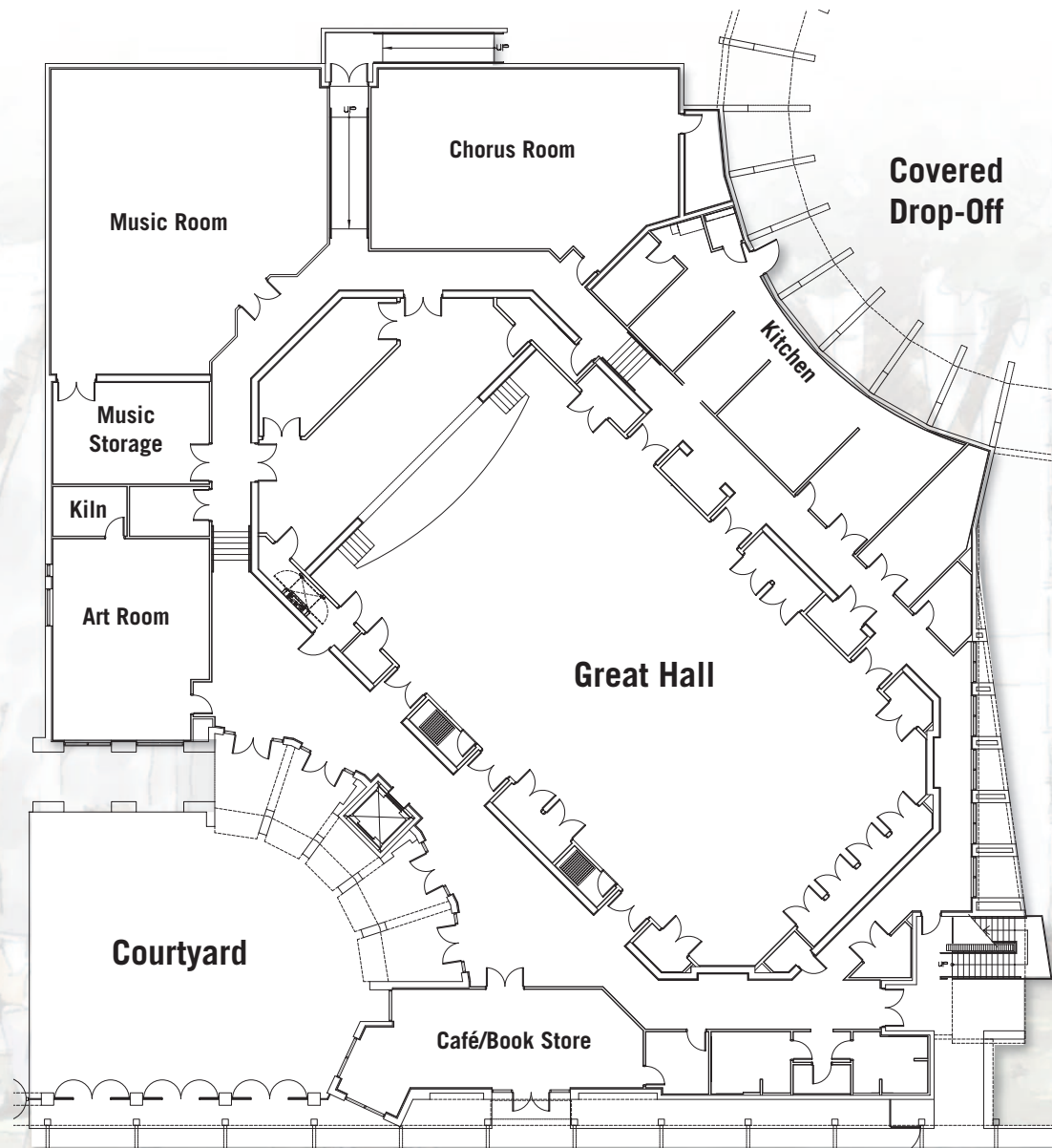


St. Mark's Hall

St. Mark's Hall, at 26,450-square-feet, is the largest structure on the new St. Mark's campus, and it will be the center of our daily church and school lives.

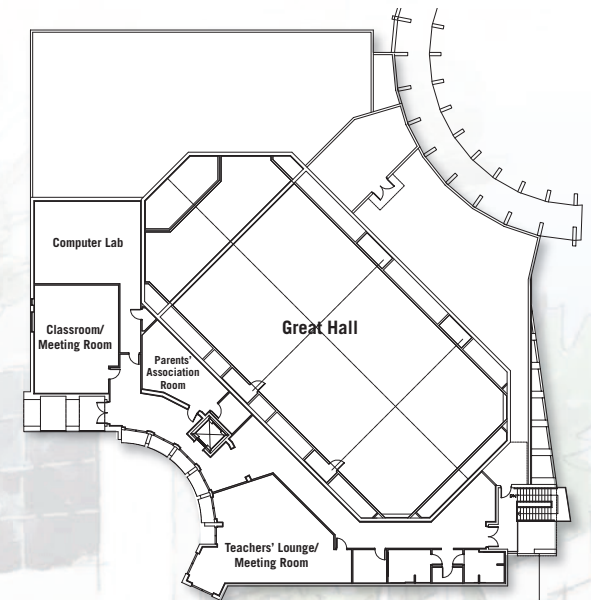
During school hours, most of the building will be used as classrooms for art, band, chorus, and computer. The Great Hall can be divided into three large spaces for school lunches, church meetings, and other activities. When configured as an auditorium, it will accommodate an audience of 450, perfect for school band and choral presentations, Christmas and Easter pageants, and other special programs.

In the evenings and on weekends, St. Mark's Hall will be used by church and school groups, as well as community-based organizations. Sunday morning breakfasts and after-church socials will be served from a fully equipped, professional kitchen.



St. Mark's Hall 1st Floor

2nd Floor



NEW EARLY LEARNING CLASSROOMS

When the band, chorus, and art classes move to their new homes in St. Mark's Hall, the first-floor of the 700 Building will be converted into six early learning classrooms.

Each classroom will include a bathroom (with smaller fixtures appropriate for 2-to 4-year-olds) and a classroom sink. For comfort and security, these will be the only classrooms on the floor.

CHURCH IMPROVEMENTS

Future plans call for improvements on the east side of the church, including a nursery; multi-purpose rooms for Christian education, Sunday school, extended care, and after-school; and modern restroom facilities.